

STOUGHTON®

It's in the details

NEW REAR UNDERRIDE GUARD Now standard on our dry vans. No additional cost. No additional weight.



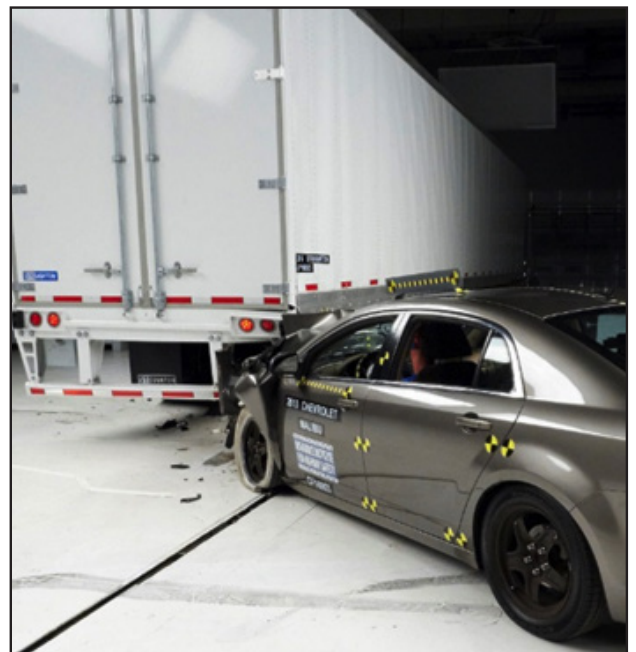
TESTED AND PROVEN DESIGN

Stoughton trailers equipped with the new patent-pending rear underride guard underwent extensive tests both internally and through multiple independent testing agencies, including crash testing performed at the Insurance Institute for Highway Safety (IIHS) facility.

The leading-edge enhancements of the rear underride guard are engineered to smoothly integrate into the trailer, creating a robust and sleek rear appearance, without adding weight to the trailer.

PROTECTS THE DRIVING PUBLIC

The new rear underride guard resists compartmental intrusion of an automobile when the location of impact is at 30% to 100% overlap of the width of the car to the underride guard, meeting the testing protocol established by the IIHS and complying with all applicable U.S. and Canadian regulations.



NEW REAR UNDERRIDE GUARD



“We place such a high value on the safety of both our customers and the driving public that we now provide a higher level of safety and performance as standard on our dry vans, at no additional cost.”

—Bob Wahlin, President & CEO

- Designed with two additional bolt-on vertical supports on the outer ends of the horizontal bar to increase strength and prevent vehicle intrusion
- All four supports are integrated into the bar and fastened to a robust under carriage to strengthen the guard
- Standard on all dry van trailer models
- No added weight
- No negative impact on aerodynamics
- No additional costs
- Available in:
 - ♦ Painted carbon steel
 - ♦ Galvanized steel
 - ♦ Stainless steel



For more information and videos, visit StoughtonTrailers.com/RearGuard

